

## Restarting Intermec CN50 Pharmascan Unit

When your Intermec CN50 Pharmascan unit is non-responsive, you might need to restart (cold boot) it by following these steps:

1. Unlatch the hand strap at the back of the unit (Figure 1).

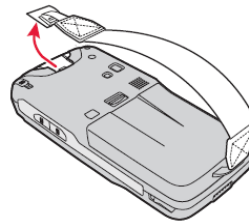


Figure 1

2. Push forward the battery release tab (blue button) until the battery releases, and then lift it away from the CN50 (Figure 2).

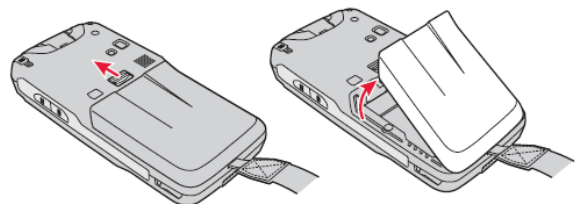


Figure 2

3. Reinsert the battery after leaving it out for 30 seconds.
4. Press and hold the power button (Figure 3) for a few seconds to turn the unit back on.



Figure 3

5. After the boot process is complete, the unit will be ready to use again as per normal.